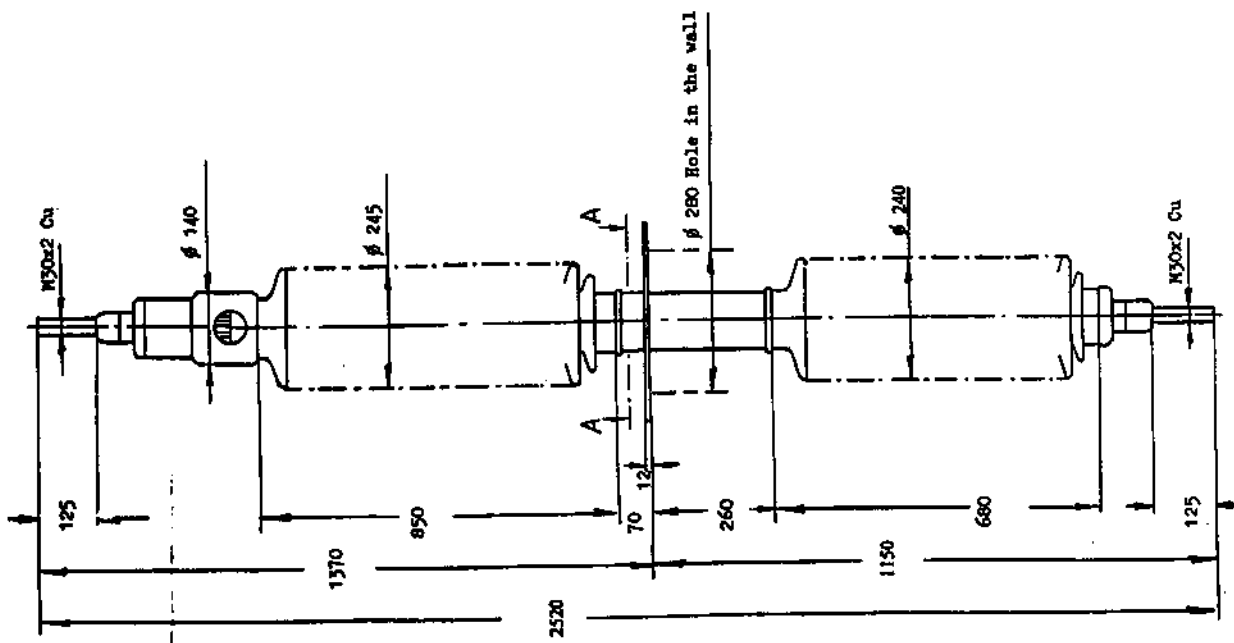


Type GOBL 380

- Rated voltage 100 kV
- Max phase-to-earth voltage 84 kV
- Rated current 600 A
- Lightning impulse 1.2/50 μ s 380 kV
- Wet AC test 150 kV
- Routine test 1 min 50 Hz 162 kV
- Creepage distance outdoors 2720 \pm 60 mm
- indoors 2210 \pm 70 mm
- Brown insulators
- Mass 96 kg



Accepted by qual	Accepted for prod by	Description (English)	DATACOM/NA
Design checked by HEYMAN	Drawn by LOFS	BUSHING GOBL 380 SPECIAL	File name
Drawing checked by JONSSON	Issued by Year Month COM/BKK 54.35	Designation (German) GENEMFÖRNG GOBL 380 SPECIAL	Long Sheet
AABB Asec Brown Boveri			Rev.
2756 040-81			5

He reserves all rights in this document and in the
 disclosure to third parties without express authority
 © ABB 1981

Drawn by	Dept	Year	Cont